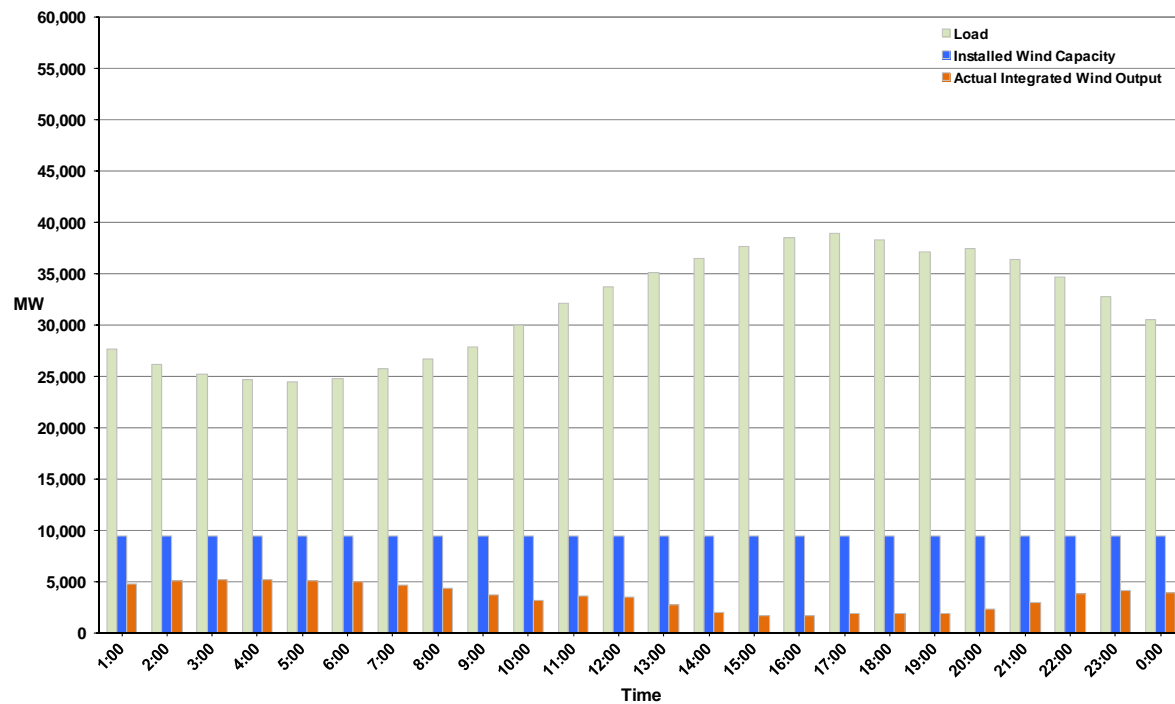




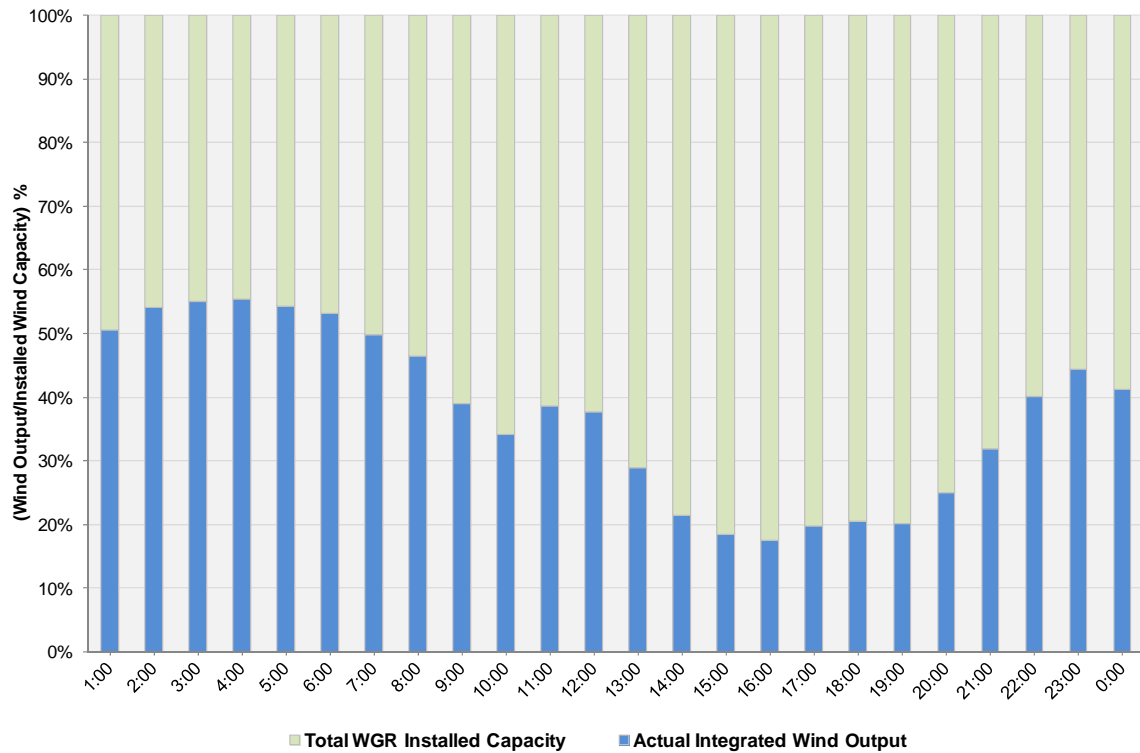
ERCOT Grid Operations Wind Integration Report: 10/22/11

Peak Load	38,937 MW
Load Peak Hour	17
Wind over Peak	1,858 MW
Wind Record 10/07/11	7,400 MW
Max Wind Value	5,302 MW
Wind Peak Time	03:32
Wind Integration %	21.48%

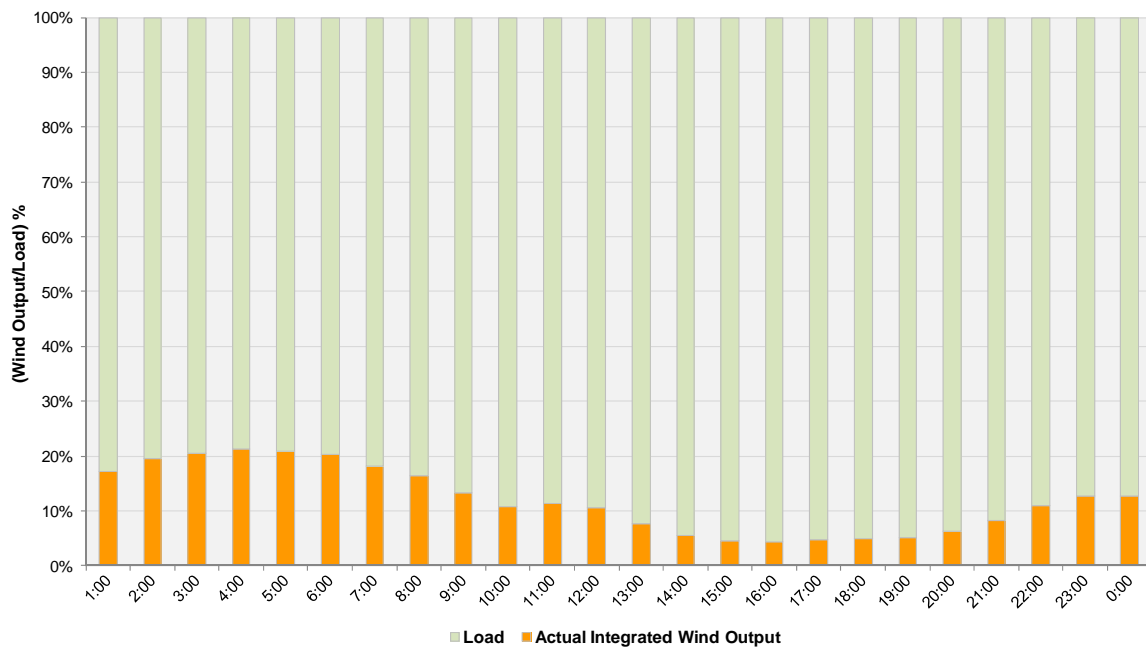
**Hourly Average Actual Load vs. Actual Wind Output
10-22-2011**



Actual Wind Output as a Percentage of the Total Installed Wind Capacity
10-22-2011



Actual Wind Output as a Percentage of the ERCOT Load
10-22-2011



ERCOT Load vs. Actual Wind Output 10/15/2011 - 10/22/2011

